

# ROUNTHWAITE & WOODHEAD

26 MARKET PLACE, KIRKBYMOORSIDE, NORTH YORKSHIRE, YO62 6DA Tel: (01751) 430034 Fax: (01751) 430964



## OAKLEA, WRELTON, PICKERING, YO18 8PF

**A charming mid terrace house in a village setting  
with a beautiful, established garden adjoining open countryside**

**Dining Room**

**Sitting Room**

**Kitchen**

**Conservatory**

**3 Double Bedrooms**

**Shower Room**

**EPC Rating D**

**Potting Shed**

**Gas Central Heating**

**GUIDE PRICE £375,000**

Also at: Market Place, Pickering Tel: (01751) 472800 & 53 Market Place, Malton Tel: (01653) 600747  
Email: [rounthwaite-woodhead@btconnect.com](mailto:rounthwaite-woodhead@btconnect.com)

**[www.rounthwaite-woodhead.co.uk](http://www.rounthwaite-woodhead.co.uk)**



## Description

The village of Wrelton is bypassed by the A170 Thirsk to Scarborough road and lies approx 3 miles to the west of Pickering and 4.7 miles east of Kirkbymoorside. Both of these desirable market towns provide an exceptionally good range of local amenities, good schools and recreational facilities. The North York Moors are a short car journey away, as is the splendid scenery that surrounds Cropton and Dalby Forests.

Oaklea is a charming stone cottage with a brick facade to its southern elevation, situated in the heart of Wrelton and is likely to appeal to a wide audience from younger families to retired persons alike. Without doubt the extensive garden is a particular feature and from its furthest boundary, there are super views across the surrounding countryside.

This much loved, family home is of a traditional layout and is now in need of some general refurbishment and updating in parts. The accommodation flows nicely and offers huge scope for further improvement and perhaps even an extension to the rear, to replace the existing conservatory (subject to the necessary planning consent). Heating is via a mains gas central heating boiler and there is a stove effect gas fire in the sitting room. There are 3 good size bedrooms upstairs along with a large shower room.

The garden is extremely private and made up of a paved patio area with low rise steps leading onto a central lawn with well stocked shrubberies, planted borders and what was once a productive vegetable garden. Included within the garden is a greenhouse, garden shed, log store and potting shed with water and electricity connected.

## General Information

Services: Mains water, electricity and gas are connected. Connection to mains drains. Gas Central Heating.

Council Tax: The property falls in band D.

Tenure: We are advised by the Vendors that the property is freehold and that vacant possession will be given upon completion. No onward chain.

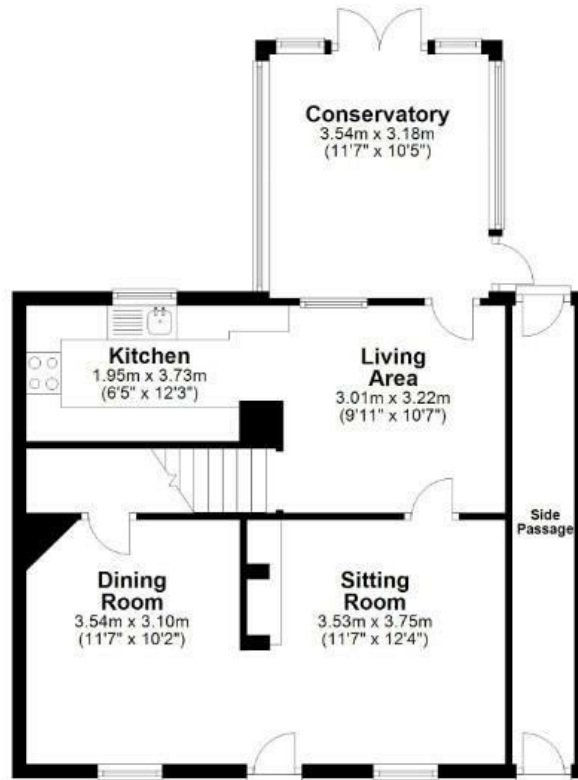
Viewing Arrangements: Strictly by appointment through the Agents Rounthwaite & Woodhead, 26 Market Place, Kirkbymoorside. Tel: 01751 430034 Email: [enquiries@rwestateagents.co.uk](mailto:enquiries@rwestateagents.co.uk)



# Accommodation

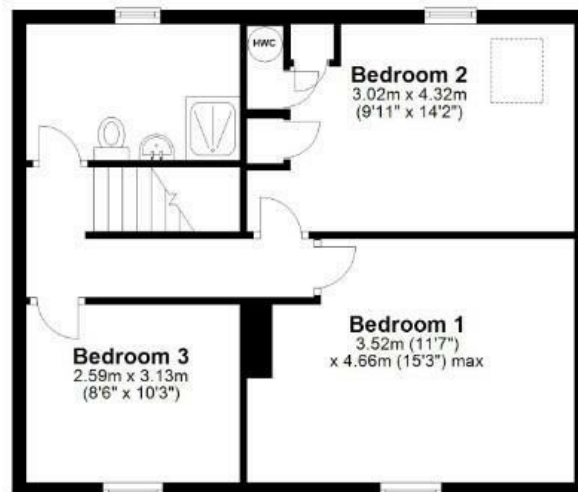
## Ground Floor

Approx. 64.4 sq. metres (693.7 sq. feet)



## First Floor

Approx. 52.9 sq. metres (569.1 sq. feet)



Total area: approx. 117.3 sq. metres (1262.8 sq. feet)

Oaklea, Wreilton

Energy Efficiency Rating		
	Current	Potential
Very energy efficient - lower running costs		
(92 plus) A		
(81-91) B		
(69-80) C		
(55-68) D		
(39-54) E		
(21-38) F		
(1-20) G		
Not energy efficient - higher running costs		
		82
	56	
England & Wales		
EU Directive 2002/91/EC		

Environmental Impact (CO <sub>2</sub> ) Rating		
	Current	Potential
Very environmentally friendly - lower CO <sub>2</sub> emissions		
(92 plus) A		
(81-91) B		
(69-80) C		
(55-68) D		
(39-54) E		
(21-38) F		
(1-20) G		
Not environmentally friendly - higher CO <sub>2</sub> emissions		
England & Wales		
EU Directive 2002/91/EC		





Messrs Rounthwaite & Woodhead for themselves and their vendors and lessors whose agents they are give notice that these particulars are produced in good faith, set out as a general guide only and do not constitute any part of a contract. No person employed by Messrs Rounthwaite & Woodhead has any authority to make or give any representation or warranty whatsoever in relation to this property. The dimensions in the sales particulars are approximate only and the accuracy of any description cannot be guaranteed. Reference to machinery, services and electrical goods does not indicate that they are in good or working order. All reference to prices and rents etc. exclude VAT which may apply in some cases.

Covering Ryedale through offices in Malton, Pickering and Kirkbymoorside  
[www.rounthwaitewoodhead.co.uk](http://www.rounthwaitewoodhead.co.uk)

ROUNTHWAITE & WOODHEAD